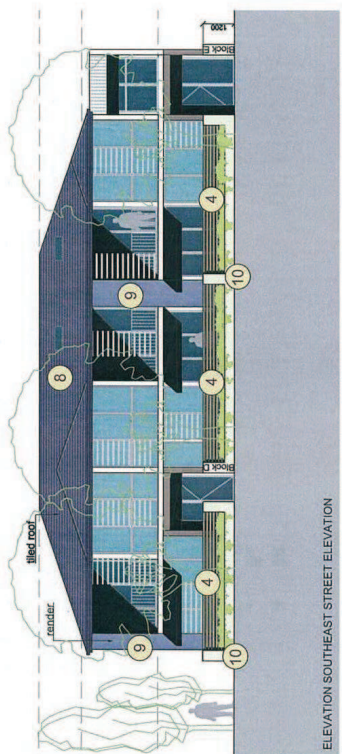
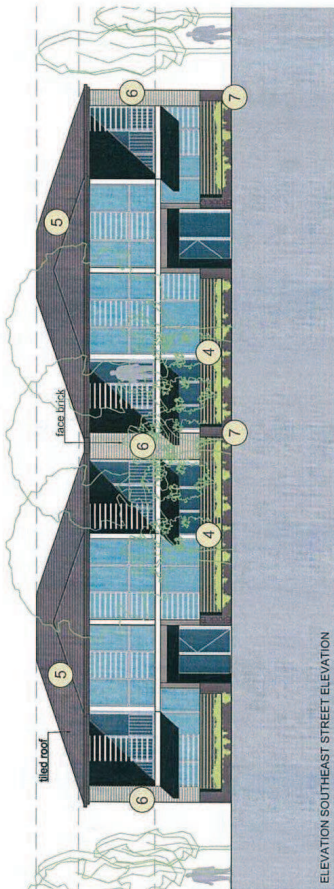
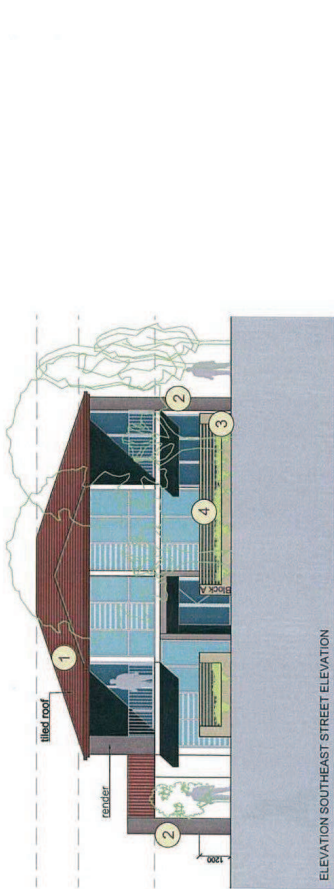


ISSUE / AMENDMENTS	DATE
A. DEVELOPMENT APPLICATION	Apr 2011
B. DESIGN REVISION	Jul 2011
C. REVISION	Oct 2011
D. DESIGN REVISION AFTER JRP/ MEETING	May 2012
E. DESIGN REVISION AFTER MEETING WITH COUNCIL	Jun 2012

- 1 **Roof Tiles**
Terracotta roof tiles
Boral - swiss modern
(crimson blaze) or similar
- 2 **Rendered Bricks**
Dulux Harold P15B7 or similar
- 3 **Rendered Bricks**
Dulux Tibetan Silk P16D7 or similar
- 4 **Fencing**
horizontal aluminium slats or similar
- 5 **Roof Tiles**
Boral in Dark Chocolate or similar
- 6 **Austral Bricks**
Symmetry
Asphalt or similar
- 7 **Rendered Bricks**
Dulux Ploughed Earth P14B7 or similar
- 8 **Roof Tiles**
Boral in feldspar or similar
- 9 **Rendered Bricks**
Dulux Oceanic A359 or similar
- 10 **Rendered Bricks**
Dulux Natural White PN1E1 or similar



SCHEDULE OF EXTERNAL FINISHES

AUSTRALIAN CONSULTANT ARCHITECTS PTY LTD are the owners of the copyright subsisting in these drawings designs and specifications. They must not be reproduced, stored in a retrieval system or transmitted in any form or by any means, electronic, mechanical, photocopying, recording or otherwise, without the prior written consent of the owners. Information ideas and concepts herein contained (which are confidential) be disclosed to any person without prior written consent of the owners.

NOTES:

1. DO NOT SCALE THE DRAWING. READ ALL DIMENSIONS SHOWN.
2. BEFORE COMMENCING NEW WORK, AND SHALL ASK IF IN DOUBT.
3. THE CONTRACTOR SHALL COMPLY WITH ALL RELEVANT AUSTRALIAN STANDARDS.
4. THE CONTRACTOR SHALL COMPLY WITH THE BUILDING CODE OF AUSTRALIA (BCA).
5. PLEASE NOTE THAT FLOOR LEVELS MAY VARY DUE TO SITE CONDITIONS.

ISSUE / AMENDMENTS	DATE
A. DEVELOPMENT APPLICATION	April 2011
B. DESIGN REVISION	July 2011
C. REVISION	Oct 2011
D. DESIGN REVISION AFTER APPR MEETING	May 2012
E. DESIGN REVISION AFTER MEETING WITH COUNCIL	Jun 2012

BASIC REQUIREMENTS

Water

- all showerheads to be 3 Star ($\leq 7.5\text{L/min}$)
- all toilet flushing systems to be 3 Star
- all kitchen & bathroom taps to be 6 Star
- all clothes washers to be 2 Star
- central water tank is connected to landscape & irrigation
- all common area taps to be 5 Star

Energy

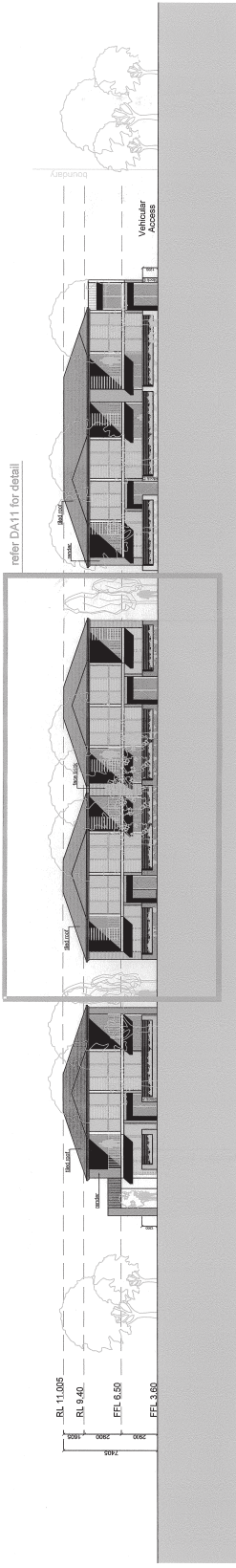
- all hot water system to be solar (electric boosted) fewer than 15 RECs
- all hot water systems to have individual fan, ducted to facade or roof
- all kitchen & laundry to have individual fan, ducted to facade or roof, manual switch on/off
- all kitchen, bathrooms/toilets, laundry, hallways must have artificial lighting
- all living areas to have heating & cooling systems with well ventilated fridge space
- all units to have refrigerator 1 Star (new rating)
- all units to have electric cooktop & electric oven
- all units to have clothes washer 2.5 Star
- all units to have clothes dryer 1.5 star



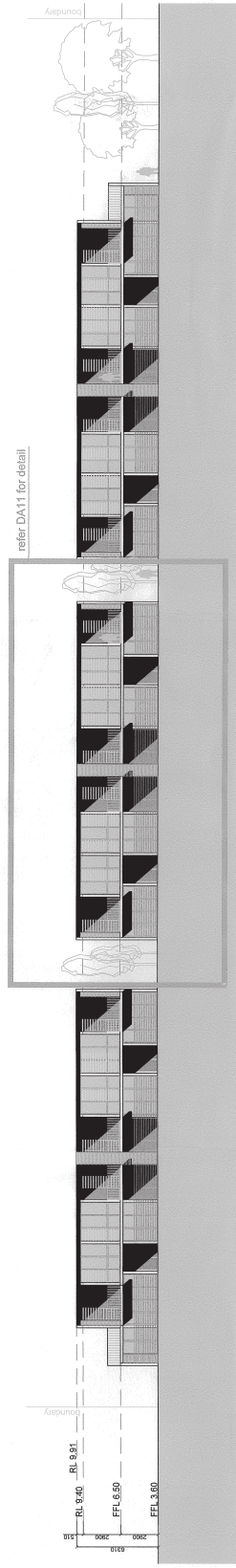
ISSUE E REVISION AFTER MEETING WITH COUNCIL Jun 2012



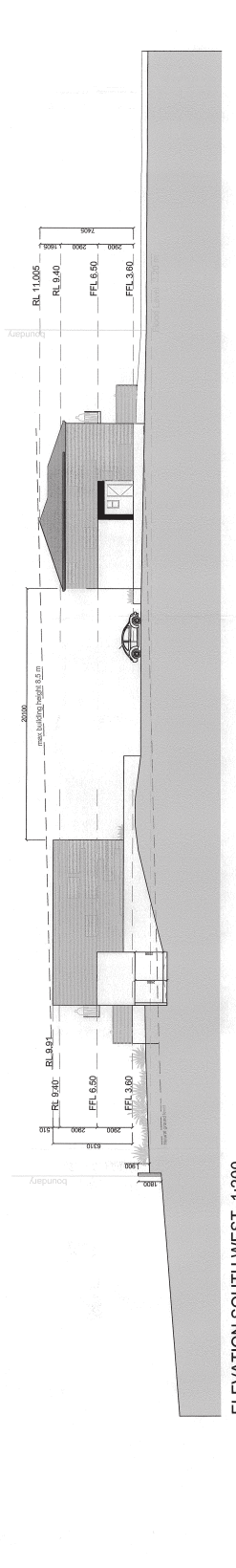
PROJECT:	14-20 Wilkes Avenue Drive North Entrance NSW	DATE:	DA09
SCALE:	As shown	DRAWN:	SA
DATE:	2011-13	CHECKED:	SA
PROJECT NO:	2011-13	DATE:	2011-13
PROJECT NAME:	Alfred House	PROJECT NO:	2011-13
PROJECT TYPE:	Alfred House	PROJECT NAME:	Alfred House
PROJECT ADDRESS:	14-20 Wilkes Avenue Drive North Entrance NSW	PROJECT TYPE:	Alfred House
PROJECT CONTACT:	12 Union Street Parramatta NSW 2150	PROJECT ADDRESS:	14-20 Wilkes Avenue Drive North Entrance NSW
PROJECT PHONE:		PROJECT CONTACT:	12 Union Street Parramatta NSW 2150
PROJECT FAX:		PROJECT PHONE:	
PROJECT EMAIL:		PROJECT FAX:	
PROJECT WEBSITE:		PROJECT EMAIL:	
PROJECT URL:		PROJECT WEBSITE:	
PROJECT REFERENCE:		PROJECT URL:	
PROJECT STATUS:		PROJECT REFERENCE:	
PROJECT DESCRIPTION:		PROJECT STATUS:	
PROJECT NOTES:		PROJECT DESCRIPTION:	
PROJECT DETAILS:		PROJECT NOTES:	
PROJECT SPECIFICATIONS:		PROJECT DETAILS:	
PROJECT DRAWINGS:		PROJECT SPECIFICATIONS:	
PROJECT SCHEDULE:		PROJECT DRAWINGS:	
PROJECT BUDGET:		PROJECT SCHEDULE:	
PROJECT RISK:		PROJECT BUDGET:	
PROJECT COMPLIANCE:		PROJECT RISK:	
PROJECT LEGAL:		PROJECT COMPLIANCE:	
PROJECT FINANCIAL:		PROJECT LEGAL:	
PROJECT OPERATIONAL:		PROJECT FINANCIAL:	
PROJECT MAINTENANCE:		PROJECT OPERATIONAL:	
PROJECT REPAIRS:		PROJECT MAINTENANCE:	
PROJECT REPLACEMENTS:		PROJECT REPAIRS:	
PROJECT UPGRADES:		PROJECT REPLACEMENTS:	
PROJECT MODIFICATIONS:		PROJECT UPGRADES:	
PROJECT ADDITIONS:		PROJECT MODIFICATIONS:	
PROJECT DELETIONS:		PROJECT ADDITIONS:	
PROJECT REVISIONS:		PROJECT DELETIONS:	
PROJECT CANCELLATIONS:		PROJECT REVISIONS:	
PROJECT RESCINDMENTS:		PROJECT CANCELLATIONS:	
PROJECT TERMINATIONS:		PROJECT RESCINDMENTS:	
PROJECT ANNULLMENTS:		PROJECT TERMINATIONS:	
PROJECT REVOCATIONS:		PROJECT ANNULLMENTS:	
PROJECT REPEALS:		PROJECT REVOCATIONS:	
PROJECT REINSTATEMENTS:		PROJECT REPEALS:	
PROJECT REINSTATEMENTS:		PROJECT REINSTATEMENTS:	



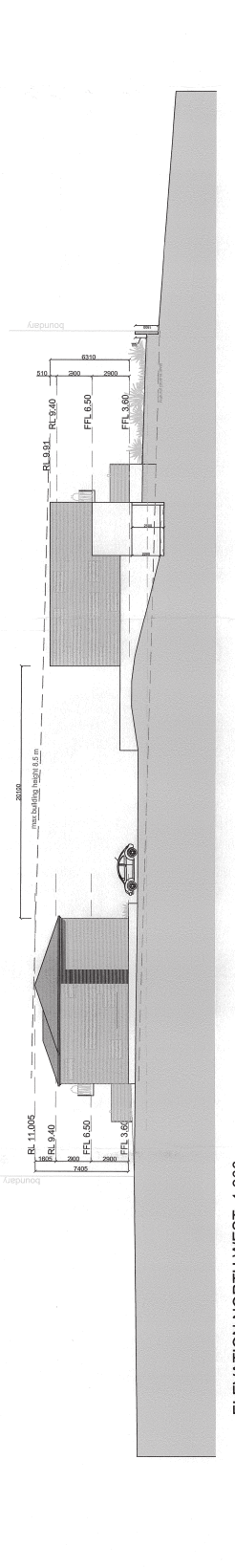
ELEVATION SOUTH EAST 1:200 street elevation



ELEVATION NORTH WEST 1:200 lake elevation



ELEVATION SOUTH WEST 1:200



ELEVATION NORTH WEST 1:200

ELEVATIONS